

Online Service for Correction of Media Files with Fast Data Transfer

Bremen, Hanover, 9th Sep. 2014 – Cube-Tec International is specialized in quality assurance solutions for large media archives. MXF Legalizer converts video files of different sources into standards compliant MXF files that interoperate perfectly with products from different manufacturers. Broadcasters and large media service providers usually install MXF Legalizer in their internal networks. However, various production houses asked for a cloud-based SaaS solution. Therefore **MXF Legalizer Online Service** has been set up. Interested parties can apply for a free test license during the pilot phase.

Jörg Houpert, Head of Technology, Cube-Tec International: *“With the MXF Legalizer Online Service our clients would like to correct media files of up to 100 GB in size – fast, safe and without hassle. With TIXEL, we have found the right partner for the data transfer component. TIXstream Express is a robust and lightweight file transfer solution – easy to integrate into our workflow engine and transparent to the user. The user benefits from reduced up- and downloads times, especially over larger distances.”*

“Transferring big files over large geographical distances can be very challenging. A lot of today’s business processes need to integrate distributed services at different locations. Cube-Tec’s MXF Legalizer Online Service represents a new type of state-of-the-art tools making technology available as a cloud-based service. This is only feasible thanks to cost efficient, secure and high-speed WAN file transfer. Collaborating with Cube-Tec is very efficient since our core competences complement each other perfectly” says **Andreas Aust, CTO of TIXEL.**

Cube-Tec and TIXEL are both active members of the FIMS Initiative of EBU/AMWA. They are showing their solution during IBC 2014, September 12-16 in Amsterdam.

Cube-Tec booth 5.C41,
TIXEL booth 8.A97

On Monday, September 15th at 13:00 Cube-Tec and TIXEL provide a joint presentation at the EBU Village, booth 10.F20.

###

(302 Words / 2.070 characters)

About TIXEL

TIXEL is a German-based vendor of solutions for high-speed transfer in wide area multi-gigabit IP networks. TIXEL products are primarily used to optimize data-intensive global applications like cloud services, big data exchange, and media production.

About Cube-Tec International

Cube-Tec International is a pioneer in quality-supervised, file-based processing for large-scale media archives. For more than 15 years Cube-Tec supports clients with innovative, customized solutions for media migration and error monitoring. Cube-Tec engineers can rely on proven experience and expertise in perception-based signal processing and best preservation practice.

Cube-Tec has developed the Cube Workflow 2.0 framework to streamline business processes which combines full automatic media processing with human-centric workflow group integration. MXF Legalizer was built on top of Cube Workflow.

Cube-Tec's products are in use at world leading media companies and renowned government archives. With installations in more than 100 media archives in 22 countries, Cube-Tec today is in a leading position in this market. Cube-Tec's technology is licensed to companies like Adobe and Steinberg Media Technologies. Also, Cube-Tec is a member of various European research projects and international media standardisation boards like SMPTE, AMWA and EBU.

For further information:



Tom Lorenz

Cube-Tec International

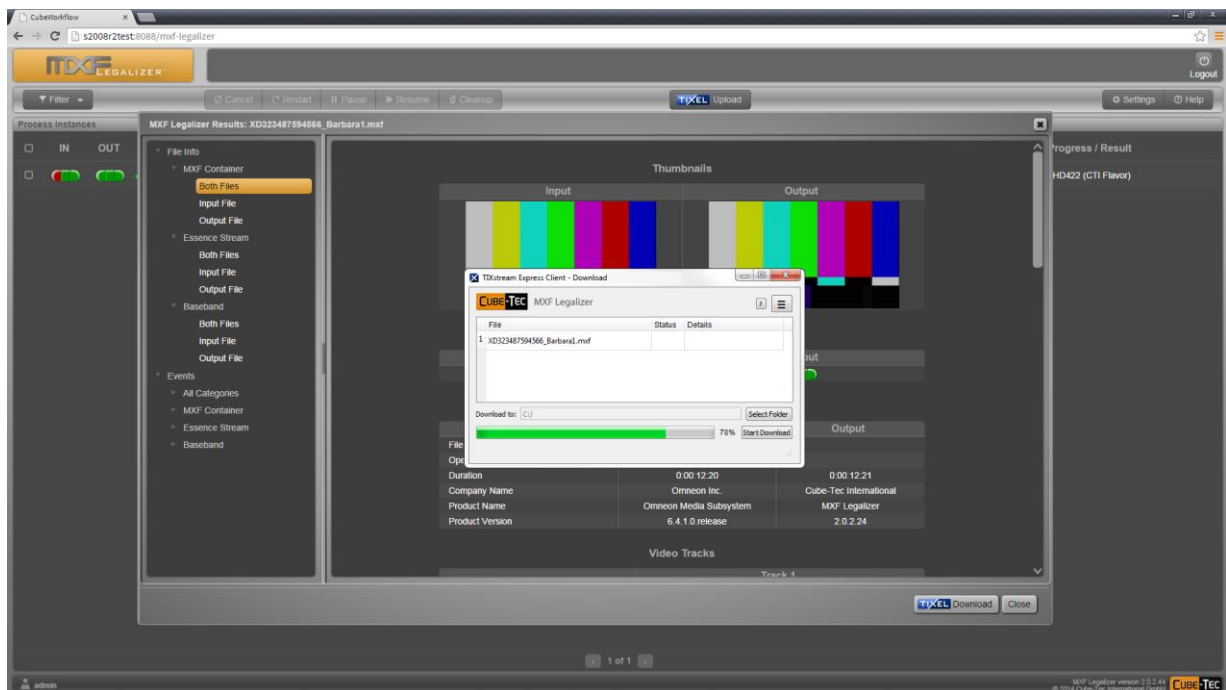
email: info@Cube-Tec.com

Ph: + 49 (0) 421 / 20 144 721

Fx: + 49 (0) 421 / 20 144 948

additional pictures for free use together with the press release

Screen shot: MXF Legalizer with TIXstream Express File Upload-Dialog



Link for the high-res picture: http://www.cube-tec.com/press/img/PR_08092014_1.png

Photo: Joint project presentation at NAB 2014



Jörg Houpert

Andreas Aust

Link for the high-res picture: http://www.cube-tec.com/press/img/PR_08092014_2.png